

# STURDY-BUILT SHEDS



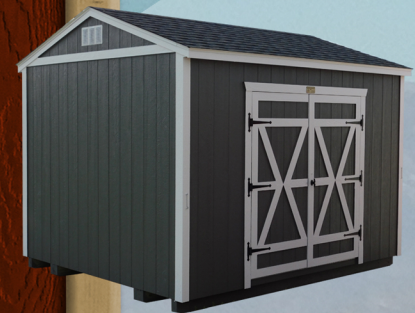
# TALL RANCH

Utility Sheds

Garages

Double-Side  
Doors w/transoms

14'x 28' w/Entry &  
Roll-up Doors



# TALL BARN

Utility Barns

12'x 28'  
w/Double-Side Doors

12'x30' w/Entry Door &  
Roll-up Door

Garages



# RUSTIC CABINS



Urethaned 10'x24' Barn  
w/Lofted Porch and Steel Roof



Painted 12'x16' Barn  
w/ Lofted Porch



Painted 10'x20' Ranch  
w/ Stained Porch & Steel Roof

Painted 10'x20' Ranch  
w/Exposed Rafter



← PARIS SPRINGS C.G. 1  
ICE CAVE 5 →

# CUSTOM STYLES



T-1-11 Siding



Chicken-Coops



Vinyl Siding

Siding  
Options

Deluxe  
Barn Style

Playhouses



LP Lap Siding



7' - 4.5"  
(INSIDE)



## TALL RANCH (INSIDE)

FULL HEIGHT FOR  
MULTIPLE SHELVES

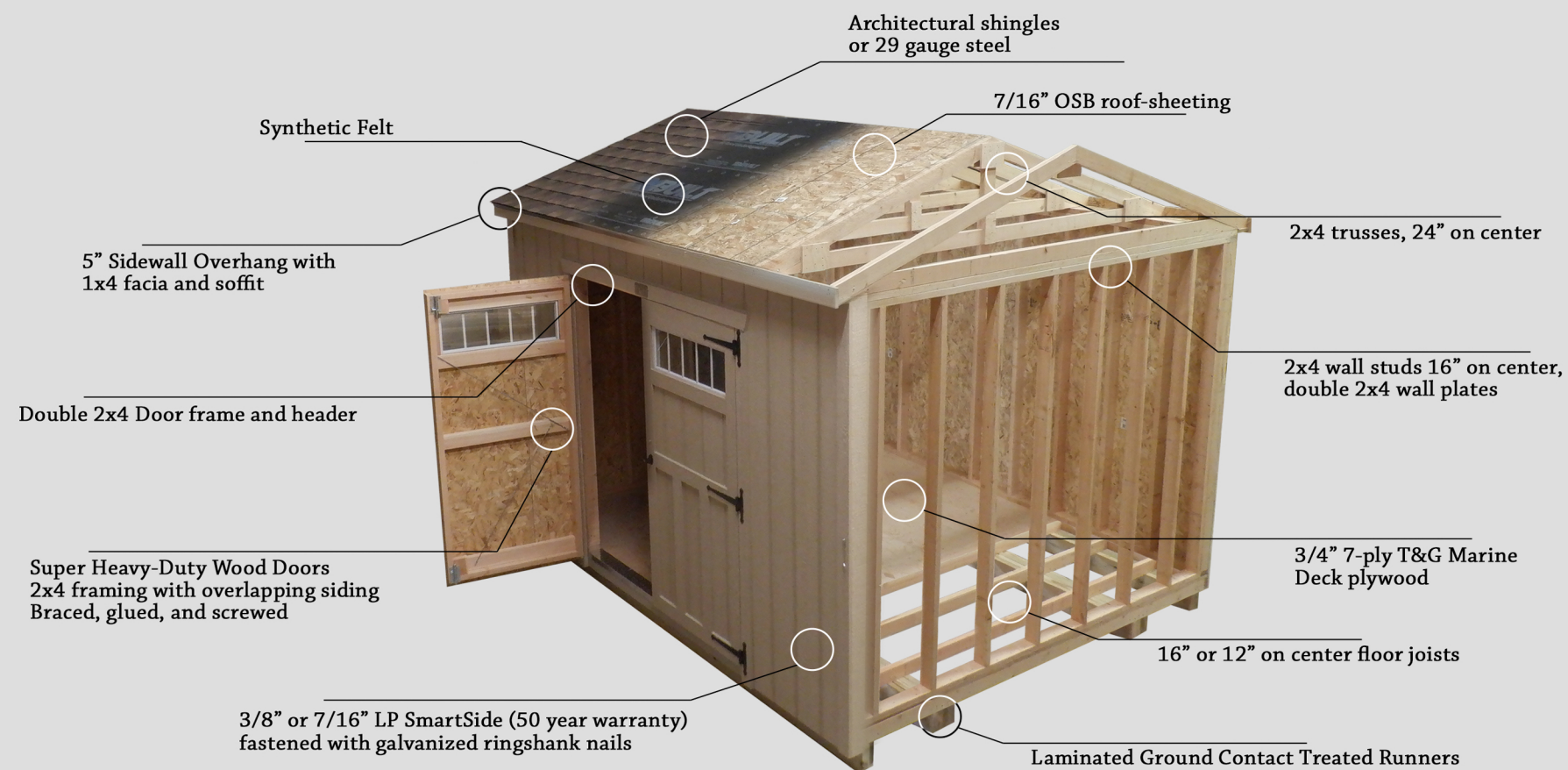
6' - 4.5"  
(INSIDE)



## TALL BARN (INSIDE)

DESIGNED FOR LOFTS

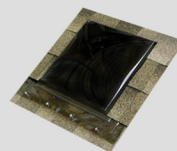
# BUILT TO LAST A LIFETIME!



# Options

Your Building, Your Way!

## Windows Options



Skylights



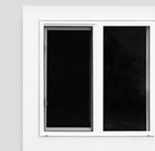
Sunburst



Octagon



1'x3' Transom



2'x2'



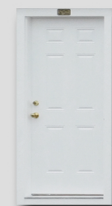
3'x3'



3'x3' w/grids

## Door Options

### Entry Doors



6-Panel



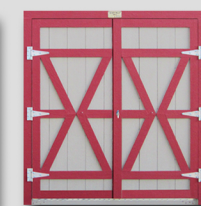
9-Lite



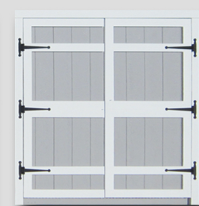
40" Single



48" Single



6' or 7' Double Doors



Transom Doors

### Wood Doors (Several Trim Styles Available)

### Garage Doors



6' or 8' Roll-up



Overhead Track Door

## Other Options



Ramps



Shelving



Lofts

# Colors

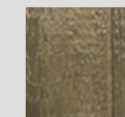
Accent your building with your color

## Paint



Choose from  
8 Standard Colors  
or Pick any  
Behr® color in the book!

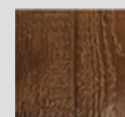
## Urethane



Driftwood



Red Cedar



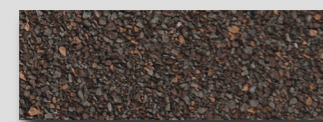
Rosewood



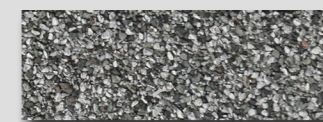
Ebony

(Stains also available for T-1-11 siding)

## Shingle Colors



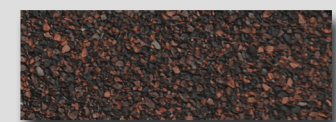
Barkwood



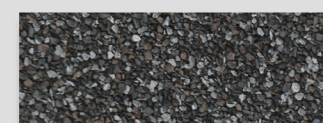
Birchwood



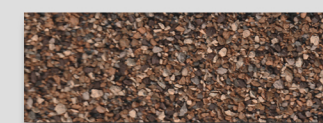
Charcoal



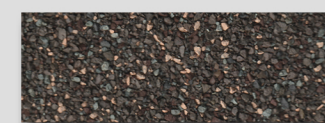
Hickory



Pewter Gray



Shakewood



Weathered Wood

## Standard Metal Colors

(Crinkle & Metallic)



Free 30 Mile Delivery

# We Do Local Delivery!

*Serving Northern Utah*

Come Visit Us at

# Sturdy Built Sheds!

*Locally Owned & Operated 25 Years*



14700 N 6000 W Garland UT 84312

(435)-257-0723



# PRICE LIST / 2026

# 435-257-0723

## STANDARD SIZES & BASE PRICES

(Prices include 1-Color Paint, Single-Barn Door, & 25 mile Delivery)

**Styles: Tall Ranch; Lean-To; Tall Barn**

8x8	\$2800	\$2800	\$2800*
8x10	3100	3300	3400
8x12	3400	3600	3700
8x14	3700	3900	4000
8x16	4000	4200	4300
8x18	4300	4500	4600
8x20	4600	4800	4900
<hr/>			
10x10	3900	4100	4300
10x12	4200	4400	4600
10x14	4500	4700	4900
10x16	4800	5000	5200
10x18	5100	5300	5500
10x20	5400	5600	5800
10x22	5700	5900	6100
10x24	6000	6200	6400
10x26	6300	6500	6700
10x28	6600	6800	7000
<hr/>			
12x12	5300	5500	5700
12x14	5700	5900	6100
12x16	6100	6300	6500
12x18	6500	6700	6900
12x20	6900	7100	7300
12x22	7300	7500	7700
12x24	7700	7900	8100
12x26	8100	8300	8500
12x28	8500	8700	8900
<hr/>			
14x20	9200	9900	*12150
14x24	10200	10900	12900
14x28	11200	11900	13650
14x30	11700	12400	14400
<hr/>			
16x30	15500	16750	17250
16x40	18500	19500	20000

\* (14' Barns & All 16' Buildings: Kit or Onsite ONLY)

\* (8x8 "Traditional Barn" has 4' Wall Height)

## PAINT

-- Base Price includes 1 "Standard Color" Paint --

Trim/2nd Color (Standard Behr Colors) . . . . .	\$200.00
Custom Colors . . . . .	\$150.00
Urethane . . . . .	\$200.00
*Unpainted Discount. . . . . (\$200 off Base Price)	

\* (No Paint Limits Standard Warranty to 5 years)

## METAL ROOFING / SHINGLES

Standard Colors . . . . .	Same Price
---------------------------	------------

## DOORS

-- Base Price includes Single-Barn Door --

### Upgrade to:

6' Double-Barn Doors . . . . .	\$300
6' Double-Barn Doors (Extra Tall) . . . . .	\$400
6' Double-Barn Doors (w/Transoms) . . . . .	\$500
7' Double-Barn Doors . . . . .	\$500
6' (wide) Steel Roll-up Door . . . . .	\$900
8' (wide) Steel Roll-up Door . . . . .	\$1,000
10' (wide) Steel Roll-up Door . . . . .	\$1,200

### Additional Options:

Extra Single-Barn Doors . . . . .	\$300
Extra Double-Barn Doors . . . . .	\$500
32" or 36" Six-Panel Entry Door . . . . .	\$600
36" 9-Light Fiberglass Entry Door . . . . .	\$700
"Custom" Fiberglass Door . . . . .	\$900

## WINDOWS

-- Custom sizes, colors, and grids available --

2'x 2' Vinyl Window (single-pane) . . . . .	\$200
2'x 3' Vinyl Window (single-pane) . . . . .	\$300
2'x 2' Vinyl Window (double-pane) . . . . .	\$250
2'x 3' Vinyl Window (double-pane) . . . . .	\$350
3'x 3' Vinyl Window (double-pane) . . . . .	\$400
4'x 4' Vinyl Window (double-pane) . . . . .	\$450
1'x 4' Vinyl Window (double-pane) . . . . .	\$300
Sunburst, Octagon, or Transom (gable window) . . . . .	\$150

## SKYLIGHTS & VENTS

14"x 14" Poly Sky-light . . . . .	\$150
12"x12" Wall Vent . . . . .	\$50
Steel Roof Vent . . . . .	\$75

## LOFTS & SHELVING

1' Wide Shelving . . . . .	\$6 Per/Linear FT
2' Wide Shelving (1/2" AC Ply) . . . . .	\$12 Per/Linear FT
Lofts (2x6 Joists - 3/4 T&G Ply) . . . . .	\$6 Per/SQ FT

## RAMPS

4' Pressure Treated Ramp . . . . .	\$250
6' Pressure Treated Ramp . . . . .	\$350
8' Pressure Treated Ramp . . . . .	\$450



## PORCHES

-- Porch Prices include Trex & "Stained or Painted" Posts/Rails --  
Rails and Posts may be customized

Sizes	Styles:	Ranch	Barn
8' Buildings - (4'x8' Porch) . . . . .		\$1300	\$1500
10' Buildings - (4'x10' Porch) . . . . .		\$1600	\$1800
12' Buildings - (4'x12' Porch) . . . . .		\$2000	\$2300
14' Buildings - (4'x14' Porch) . . . . .		\$2500	\$2800

Custom Porches Available . . . . . Ask for Quote

## CUSTOM SIDING OPTIONS

Board/Batten, Lap, Fir, Shakes, or Vinyl . . . . . Ask for Quote

## SPECIALTY DORMERS & ROOF STYLES

-- Make your shed One-of-a-Kind by adding a special touch --

Doorway Dormer . . . . .	\$100/Per Lin FT
Ridge Dormer . . . . .	\$100/Per Lin FT
Deluxe Barn Style . . . . .	\$100/Per FT (Building Width)

\*Dormer prices do not include windows\*

## GREEN HOUSES

Multiple Options Available . . . . . Ask for Quote

## KITS & ONSITES

Build-It-Yourself Kits . . . . . -15% off Shed Price  
Kits include all materials (except fasteners). Everything is precut and numbered,  
with brief assembly instructions telephone assistance included. **Delivery extra.**

Onsite Builds (8x8 -14x30) . . . . . +15% on Shed Price

Custom Onsite Builds (or Larger than 14x30) . . . . . Ask for Quote